

WHERE *Exquisite* DESIGN, *Comfort* AND *Nature* ALIGN

THE ADAMS



2 Bedrooms
2.5 Baths
2,508 Total Square Feet

DEVELOPED BY



NORTHLAND
RESIDENTIAL

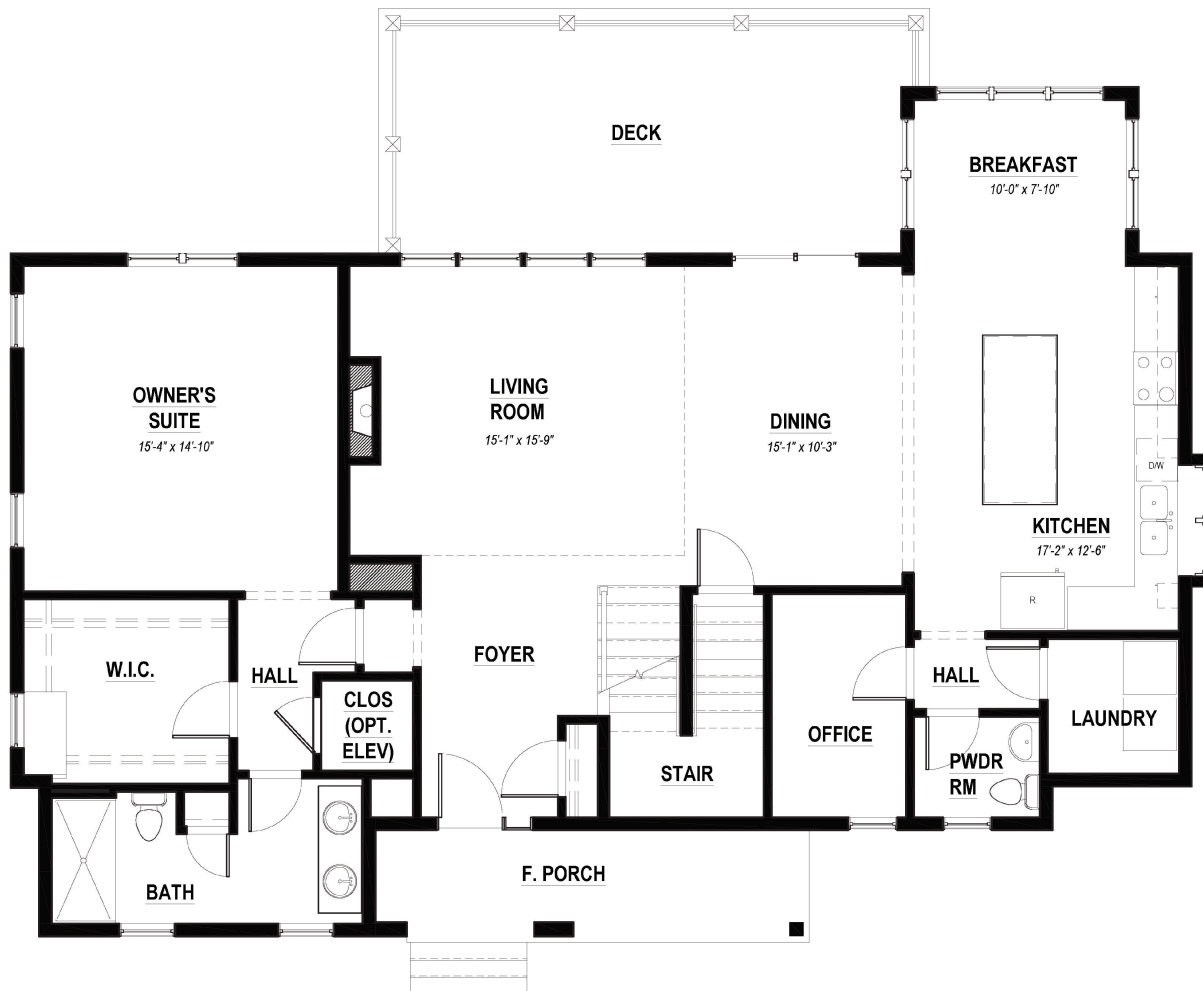
PRESENTED BY

LandVest
REAL ESTATE

Images and floor plans for illustrative purposes only. Details subject to change without notice. April 2021

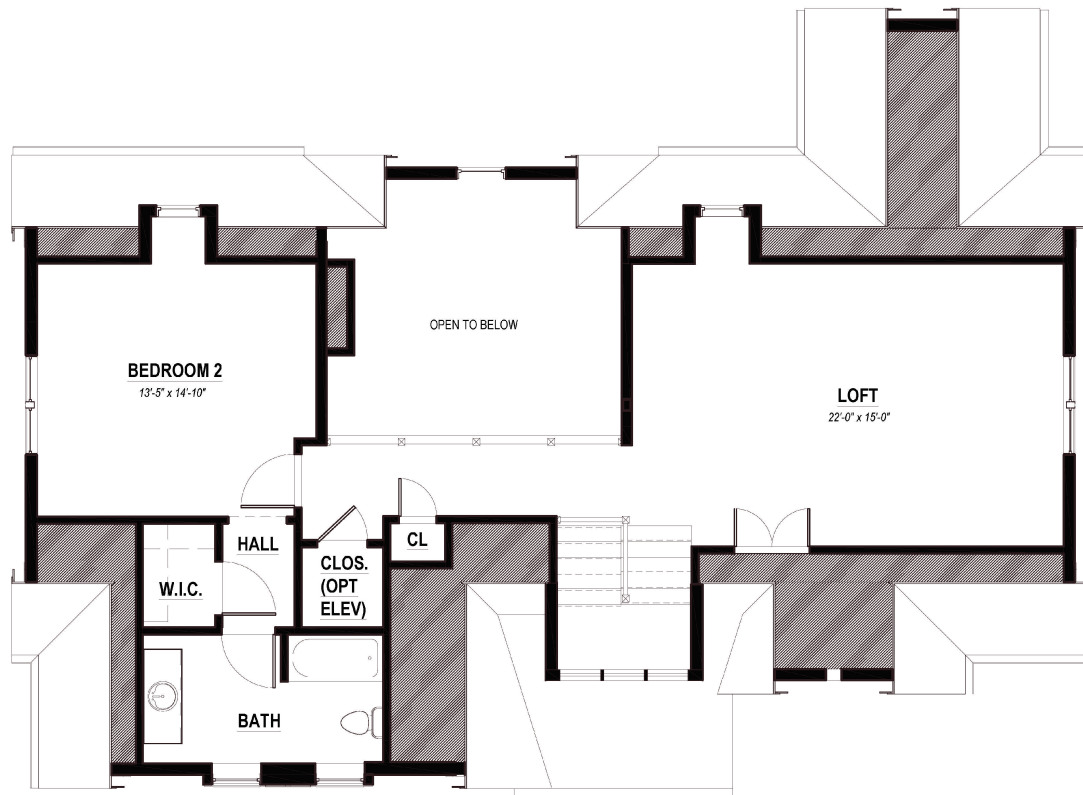


FIRST FLOOR PLAN - 1,651 SF



2 Bedrooms
2.5 Baths
2,508 Total Square Feet

SECOND FLOOR PLAN - 857 SF



8 Wolcott Woods Lane This free standing, shingle-style home with handsome fieldstone accents, is set in a premier location adjacent to the estate's historic Manor House. This Adams design shares an enclave with just one other home and will overlook a lovely, manicured lawn, the perfect setting for an afternoon of croquet. The open floorplan affords relaxed living spaces like a fireplaced great room and a dining room with sliders to the rear deck. The kitchen, with its large island and light-filled breakfast room, is sure to be another focal point for entertaining. Completing the first floor is an owner's suite with a large walk-in closet and marble shower, a home office, and laundry room. Upstairs are a second bedroom, full bath, and spacious loft. A unique opportunity exists on the "walk-out" lower level to create additional living area such as a workout, family, or hobby room.