

WHERE *Exquisite* DESIGN, *Comfort* AND *Nature* ALIGN

THE DRAPER



3 Bedrooms + Den
2.5 Baths
2,748 Total Square Feet

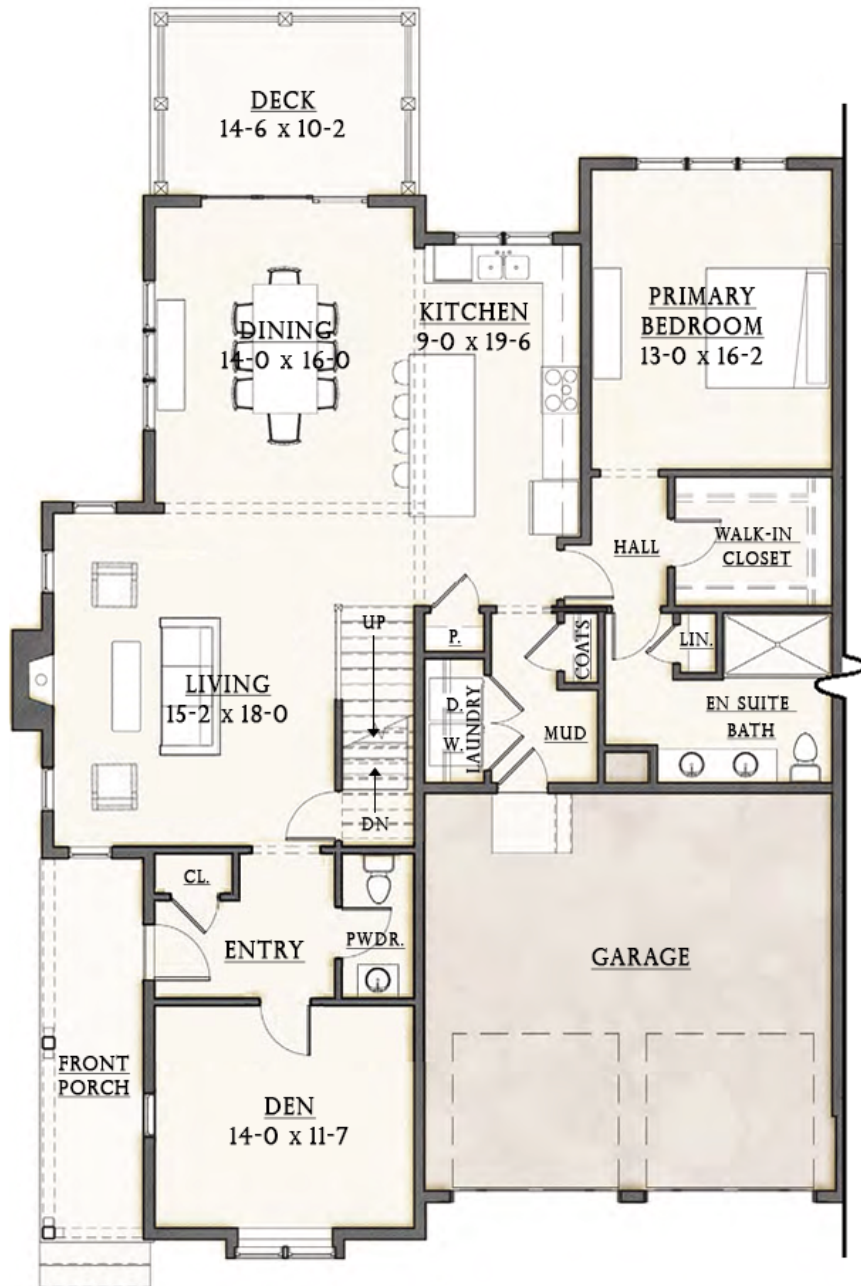
DEVELOPED BY
 NORTHLAND
RESIDENTIAL

PRESENTED BY
LandVest
REAL ESTATE

Images and floor plans for illustrative purposes only. Details subject to change without notice. September 2020

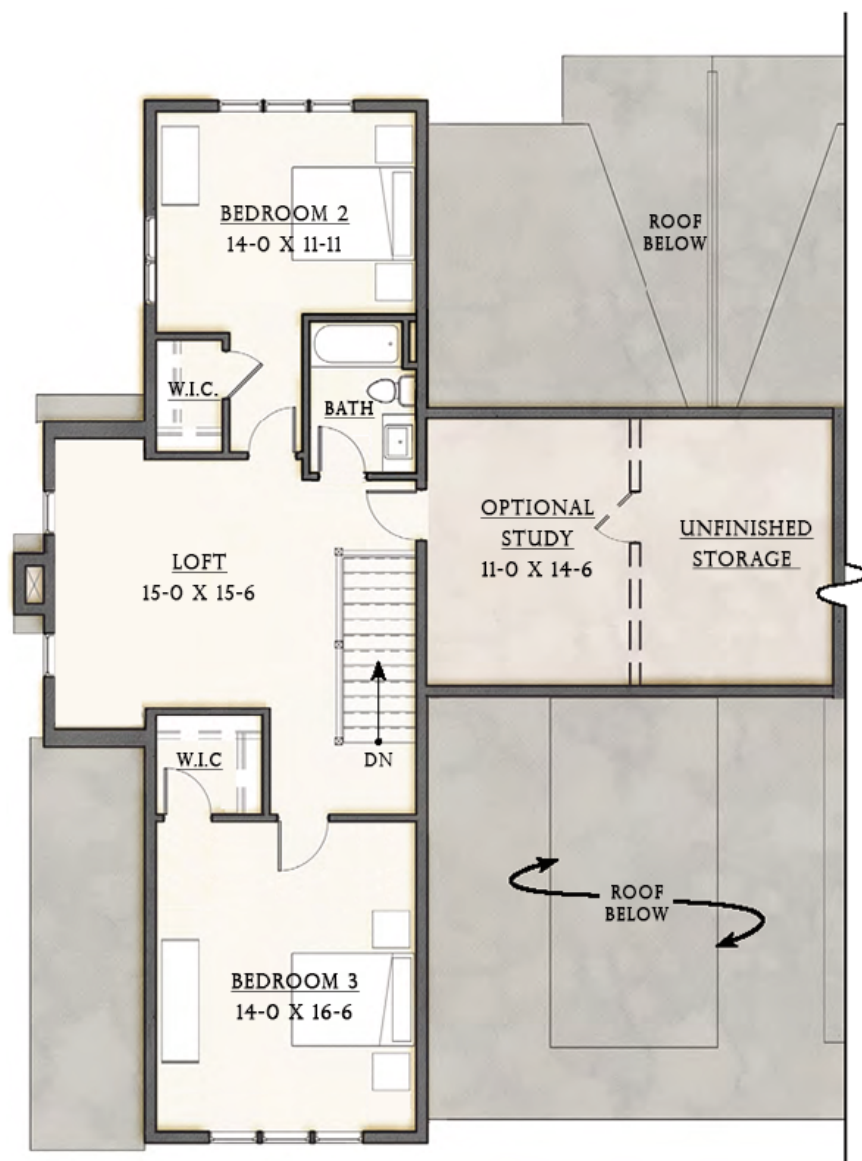


FIRST FLOOR PLAN - 1,665 SF



3 Bedrooms + Den
2.5 Baths
2,725 Total Square Feet

SECOND FLOOR PLAN - 1,083 SF



The Draper Step into the foyer of this three-bedroom, two and a half bath home from a charming front porch. In a living space designed for relaxing and entertaining, light floods the open floor plan and highlights features like the fireplaced living room and the expansive island in the kitchen. With scenery like this, connecting the inside to the great outdoors is essential. Whether it's through the views from the living area, the direct access to the deck from the dining room, or the sights from the triple windows in the first-floor owner's suite, that connection is maintained. For reading, working, or admiring the scenery, the den offers a private retreat on the first floor. Two additional guest bedrooms are on the second floor, as well as an oversized loft and ample storage.