

WHERE *Exquisite* DESIGN, *Comfort* AND *Nature* ALIGN

THE ADAMS



2 Bedrooms + Loft
2.5 Baths
2,500 Total Square Feet

DEVELOPED BY



NORTHLAND
RESIDENTIAL

PRESENTED BY

LandVest
REAL ESTATE

Images and floorplans are for illustrative purposes only. Details are subject to change without notice. Note: Decorative appointments such as fieldstone accents, chimneys and other exterior enhancements are predetermined and incorporated on a site-specific basis. February 2023.

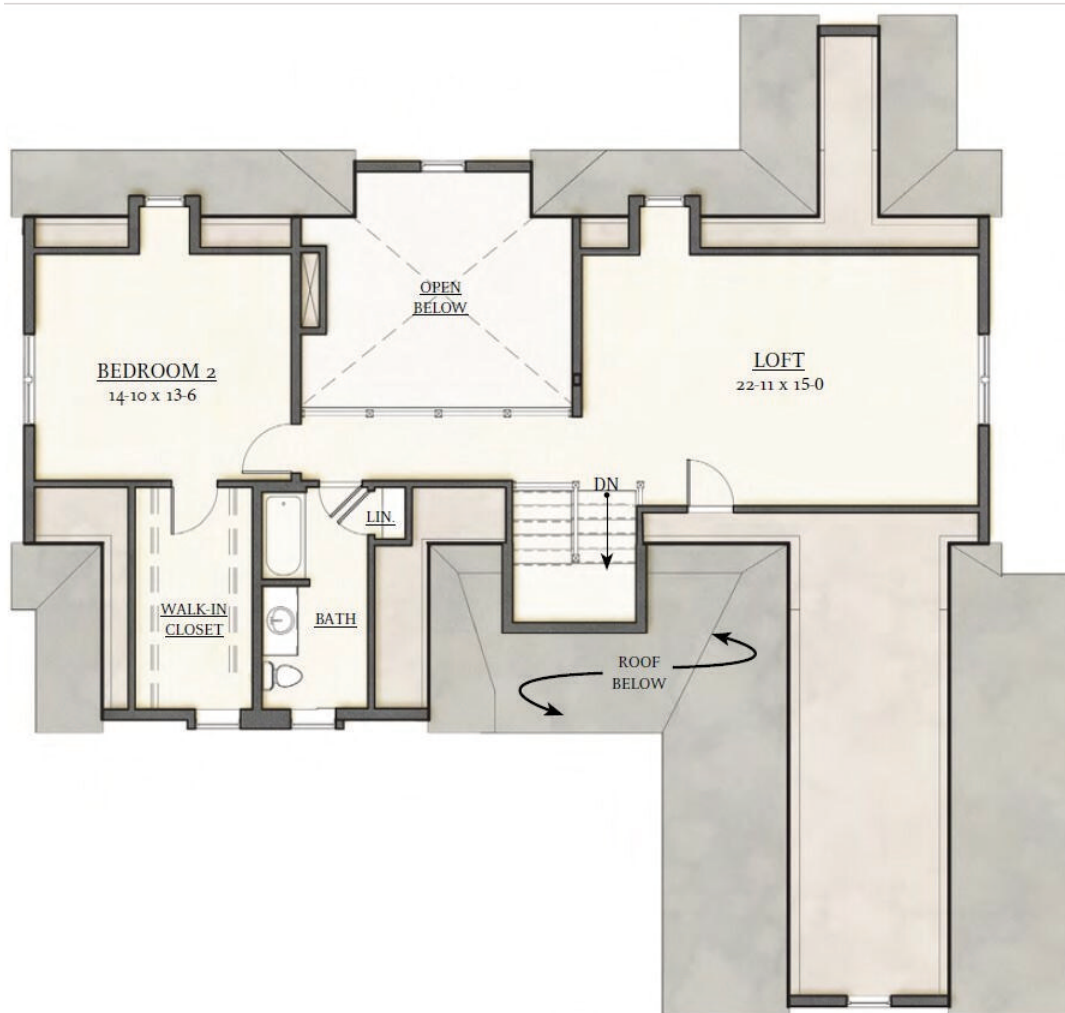


FIRST FLOOR PLAN - 1,643 SF



2 Bedrooms + Loft
2.5 Baths
2,500 Total Square Feet

SECOND FLOOR PLAN - 857 SF



The Adams At this detached two-bedroom home, be welcomed by a distinctive portico. Gather family and friends in the open floor plan, where they can admire the dramatic outdoor views this natural setting offers. The kitchen has the space everyone from an amateur cook to a gourmet chef would appreciate, with a large island and walk-in pantry. From the kitchen look out over the separate breakfast room as well as the airy living room with its soaring two-story ceilings. To add to the ease and convenience of this home, the first floor also includes an owner's retreat with a spacious bedroom, walk-in closet, and private bath. When extra space is needed, the second floor has an additional bedroom, a full bath, and a loft.