

WHERE *Exquisite* DESIGN, *Comfort* AND *Nature* ALIGN

THE BRADFORD



2 Bedrooms + Den
2.5 Baths
2,497 Total Square Feet

DEVELOPED BY



NORTHLAND
RESIDENTIAL

PRESENTED BY

LandVest
REAL ESTATE

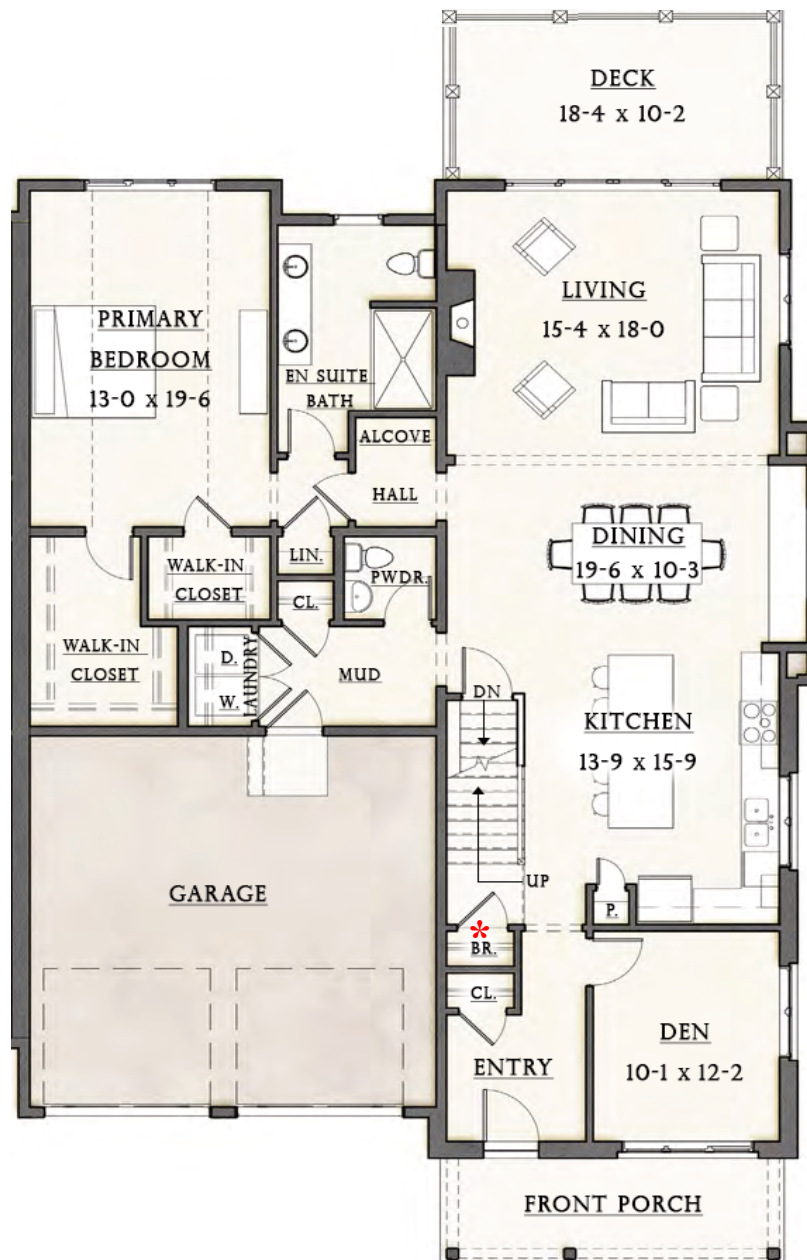
Images and floorplans are for illustrative purposes only. Details are subject to change without notice. Note: Decorative appointments such as fieldstone accents, chimneys and other exterior enhancements are predetermined and incorporated on a site-specific basis. February 2023.



THE BRADFORD



FIRST FLOOR PLAN - 1,762 SF

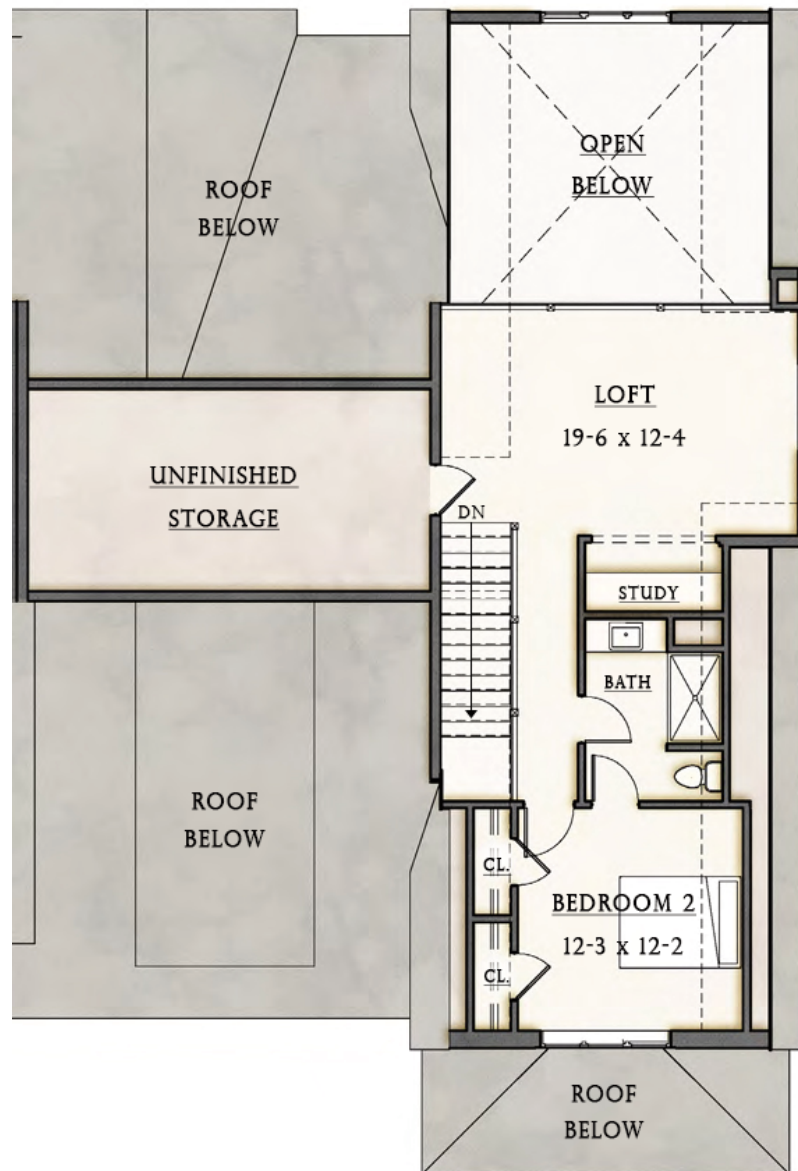


2 Bedrooms + Den
2.5 Baths
2,497 Total Square Feet

THE BRADFORD



SECOND FLOOR PLAN - 735 SF



The Bradford The farmer's porch at this two-bedroom design is a perfect gathering spot to enjoy the scenic, natural setting while socializing with friends and neighbors. Even inside, the stunning seasonal panoramas are highlighted in the open concept living space. Overlooking a deck, which offers more outdoor living space, this first floor area features a living room accented by a cathedral ceiling. Look no further than the cozy den tucked off the foyer when privacy is needed or head to the expansive loft on the second floor, which can serve as an office, a workspace, and a family room. The second floor also offers an additional bedroom and a full bath, perfect for guests.