

WHERE *Exquisite* DESIGN, *Comfort* AND *Nature* ALIGN

THE ADAMS



2 Bedrooms
2.5 Baths
2,460 Total Square Feet

DEVELOPED BY



PRESENTED BY



Images and floor plans for illustrative purposes only. Details subject to change without notice. December 2021

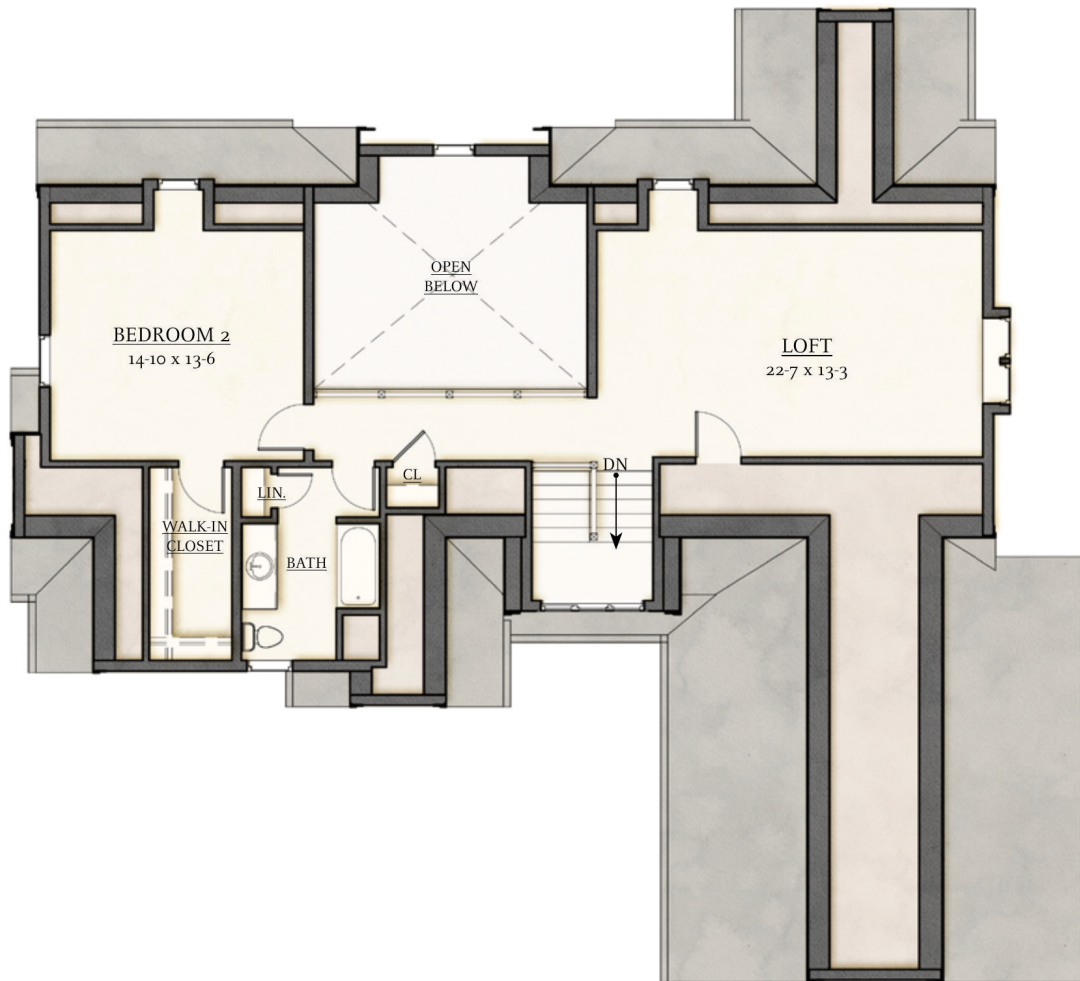


FIRST FLOOR PLAN - 1,648 SF



2 Bedrooms
2.5 Baths
2,460 Total Square Feet

SECOND FLOOR PLAN - 812 SF



The Adams A free-standing Adams at Wolcott Woods, suburban Boston's premier 55+ neighborhood. This coveted detached design is sure to make a statement with its lovely portico entrance and expansive open floor plan. Its well-appointed Kitchen with adjacent Breakfast Room overlooking the deck and fireplaced living room with cathedral ceilings provide an ideal setting for entertaining. A grand 1st-floor Owner's Suite, spacious Loft, and 2nd floor Guest accommodations further distinguish this plan. Its walk-out lower level provides the option for finishing additional living area.