

WHERE *Exquisite* DESIGN, *Comfort* AND *Nature* ALIGN

# THE CUSHING



3 Bedrooms + Den  
3.5 Baths  
2,816 Total Square Feet

DEVELOPED BY



NORTHLAND  
RESIDENTIAL

PRESENTED BY

**LandVest**  
REAL ESTATE

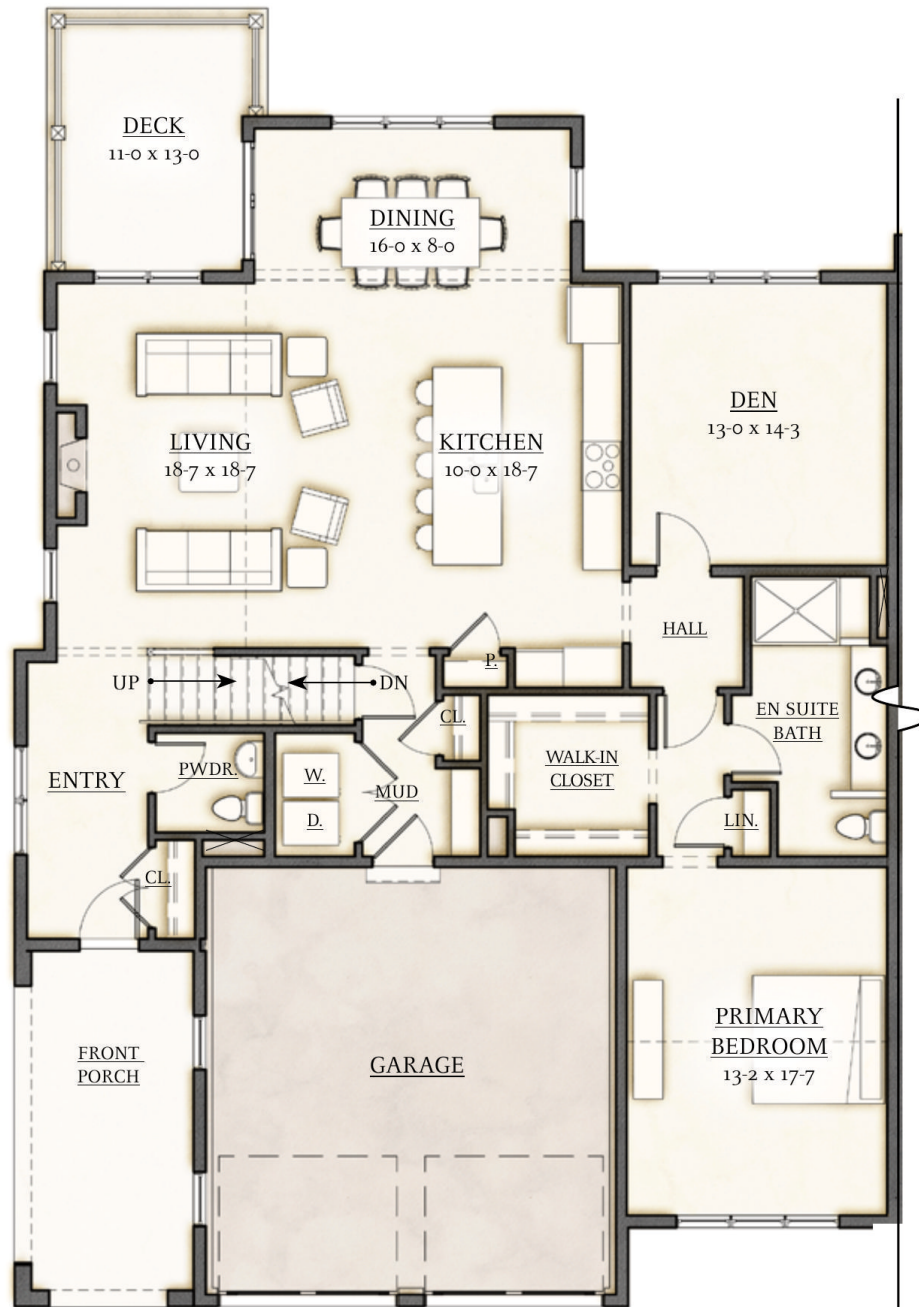
Images and floor plans for illustrative purposes only. Details subject to change without notice. December 2021



# THE CUSHING

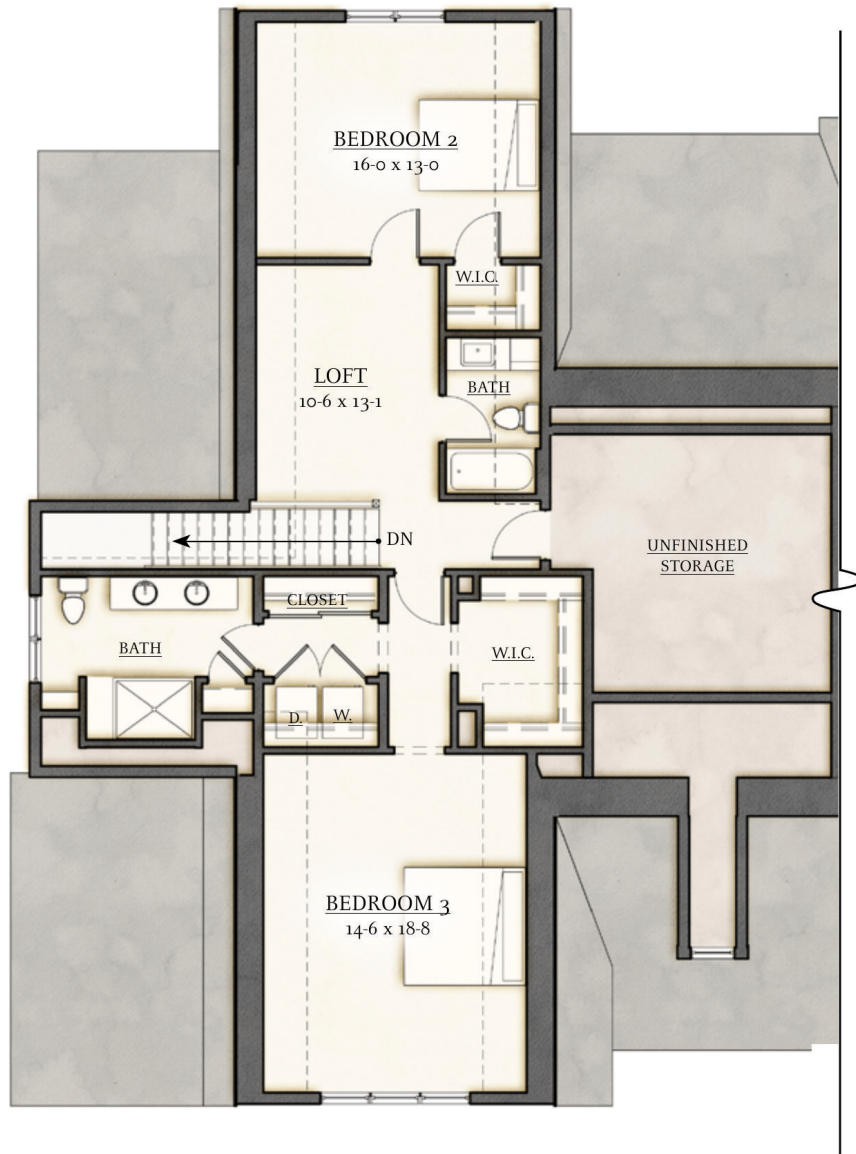


## FIRST FLOOR PLAN - 1,724 SF



**3 Bedrooms + Den**  
**3.5 Baths**  
**2,816 Total Square Feet**

## SECOND FLOOR PLAN - 1,092 SF



***The Cushing*** Richly appointed, thoughtfully sited, and surrounded by nature, Wolcott Woods, suburban Boston's premier 55+ community, offers a portfolio of floorplans to suit today's lifestyles. The classic side entry porch of the Cushing 3- bedroom design sets the tone for this gracious townhome. It's distinguished by two lavishly appointed Owners' Suites (1st and 2nd floors) and complemented with the added convenience of laundries on both levels. The home's hub of activity is the 1st floor' "Grand Room," where everyone can gather around the fireplace, the massive kitchen island, or the dining room table, or spread out across the open floor plan and spill out onto the deck. The separate den and upstairs loft provide a quiet retreat.